



SYHARVEST

Sheungyin Harvest Aluminium Co., Ltd.

International Intelligent Aluminum
Manufacturing Experts



CONTACT US

+86 139-2867-0680

www.syharvest.com

tjf@syharvest.com

(Syharvest) Guangyun Road, Muyuan,
Shishan Town, Foshan, Guangdong, China



MANUFACTURER INTRODUCTION

Sheungyin Harvest Aluminium Co., Ltd.

Sheungyin Harvest Aluminium Co., Ltd. is a comprehensive aluminum profile factory specializing in the development, design, and manufacturing of aluminum extrusions. Covering an area of over 30,000 square meters, we operate 10 extrusion lines and 20 precision machining centers and have a dedicated team of 30 professionals specialized in foreign trade marketing.

With over 25 years of experience, our factory is a leading and advanced company in the architectural, decorative, and industrial aluminum profile industry in China. With an annual output of approximately 60,000 tons, our most popular and best-selling products include anodized, powder-coated, wooden grain, electrophoresis, polished, and CNC profiles.

We continually strive to meet our customers' unique demands by offering tailor-made products, especially for those requiring CNC hole punching, screwing, milling, precision cutting, piece powder coating, and anodizing. To support these capabilities, our factory is equipped with a CNC machining center and imported high-tech machines.

Our unwavering commitment to continual self-improvement and pursuit of excellence has made us a well-known brand throughout China. Our profiles have been exported to over 50 countries. We enthusiastically welcome customers from around the world to visit our factory at any time.



MOLD WAREHOUSE



EXTRUSION WORKSHOP



ANODIZING WORKSHOP



SANDBLASTING WORKSHOP



POWDER COATING WORKSHOP



CNC LINE

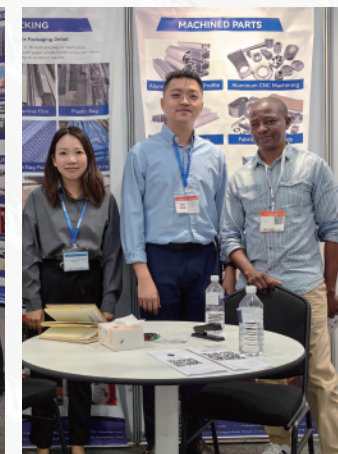


PACKAGING WORKSHOP

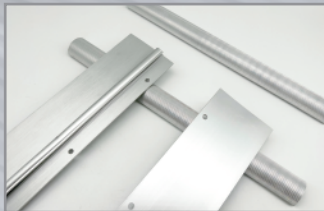


WAREHOUSE

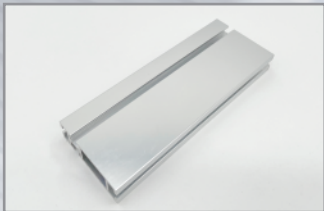
CUSTOMER VISIT



SURFACE TREATMENT



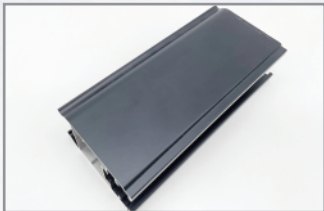
Mill Finish



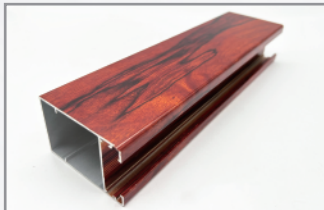
Anodizing



Electrophoresis



Powder Coating

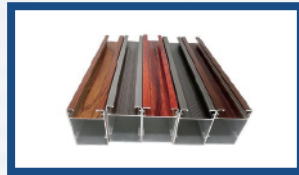
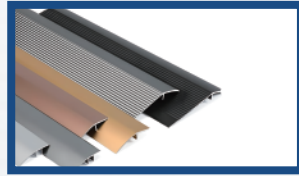
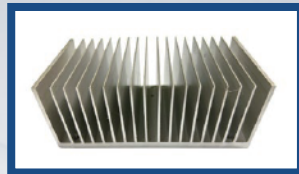
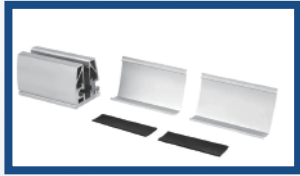
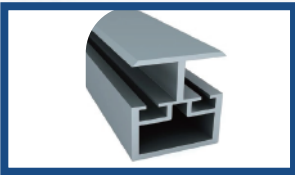
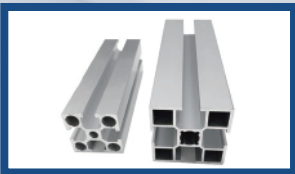
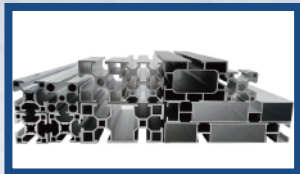
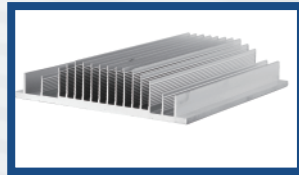
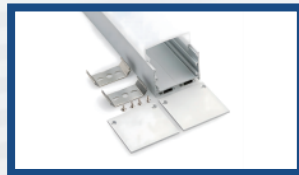
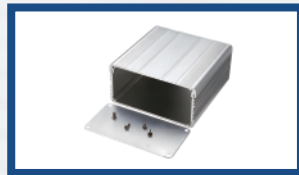
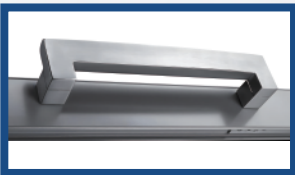
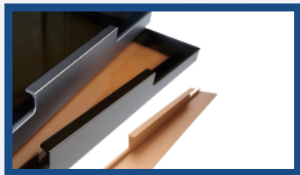
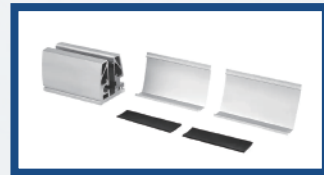


Wood Grain



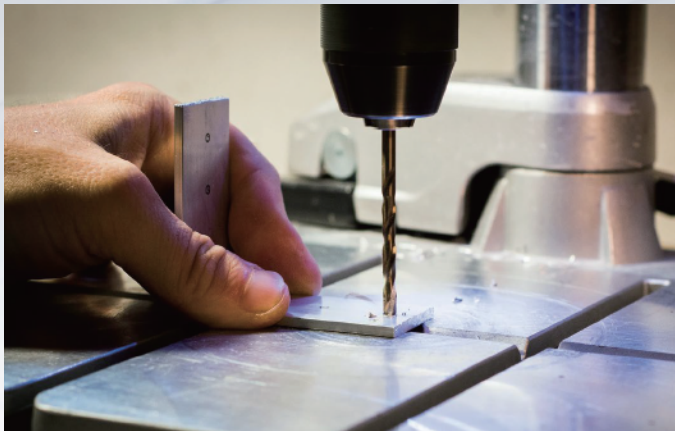
Brushed

PRODUCT SHOWCASE

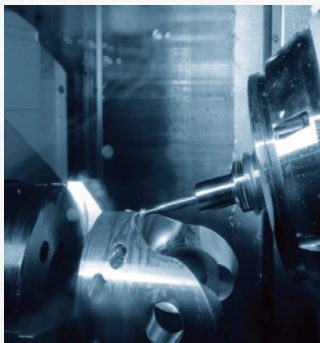


FABRICATION SERVICE

High Precision Equipments Tolerance Within $\pm 0.02\text{mm}$



CNC Milling



CNC Turning



Bending



Welding



Punching

WHY CHOOSE US?

- COMPREHENSIVE SOLUTIONS:**We provide a one-stop-shop for all your aluminum processing needs, streamlining the production process and saving you time and effort.
- QUALITY ASSURANCE:**Rigorous quality control measures are implemented at every stage, ensuring that you receive products of exceptional quality.
- INNOVATION:**We stay at the forefront of technology and industry trends to offer you cutting-edge solutions and materials.
- CUSTOMIZATION:**We understand that each project is unique. Our team works closely with you to tailor solutions that precisely match your specifications.
- RELIABILITY:**With years of experience, we have built a reputation for delivering orders on time, consistently meeting deadlines.
- ENVIRONMENTAL RESPONSIBILITY:**We are committed to sustainable manufacturing practices and minimizing our environmental impact.

